



BELLE PLAINE

NEWS & EVENTS

Fall 2020

National, county races on ballot

The 2020 election is headlined by the contest between President Donald Trump and Joe Biden. But there are many other federal, state and local offices that will be filled by voters who go to the polls in Belle Plaine on Tuesday, Nov. 3.

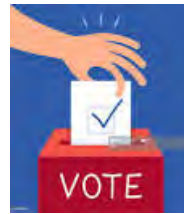
Congress: Incumbent Mike Gallagher is challenged by Democrat Amanda Struck in the 8th District.

State Senate: Incumbent Robert L. Cowles, a Republican, is running unopposed in District 2.

State Assembly: Republican incumbent Gary Tauchen is opposed by Richard Sarnwick, a Democrat, in District 6.

County offices: District Attorney Greg Parker is being challenged by Aaron Damrau, an independent. Running unopposed are County Clerk Pamela Schmidt, County Treasurer Debra K. Wallace and Register of Deeds Amy Dillenburger.

Clintonville schools: Clintonville School District voters will be voting on a referendum that would authorize a \$37 million



Fall 2020 election

Tuesday, Nov. 3

7 a.m. to 8 p.m.

Belle Plaine Community Center

Covid-19 safety precautions in place

project to include a new elementary school and an addition to Clintonville High School. The School Board, by a unanimous vote in August, approved a resolution to authorize general obligation bonds in an amount not to exceed \$37 million and that the question be placed on the Nov. 3 ballot.

Superintendent David Dyb said the proposal would not raise property taxes in the district because the high school debt will be paid off shortly.

Absentee ballots, early voting available for Nov. 3 election

With the Covid-19 virus still lurking, more voters are likely to fill out absentee ballots rather than vote in person in the Nov. 3 election.

The in-person voting from 7 a.m. to 8 p.m. will include safety precautions at the Belle Plaine Community Center including shields, spacing and cleaning.

Absentee ballots are also available, handled by Town Clerk **Kris Vomastik**. She suggests starting at the official Wisconsin election website www.myvote.wi.gov.

Inside this issue:

That site has information about how to register to vote and how to obtain an absentee (early) ballot. Voters enter

name and date of birth, then verify the address and click on "request absentee ballot."

Vomastik will send the ballot out. Voters must submit a copy of an ID or driver's license when sending it in, as well as having a co-signer. Completed ballots can be mailed or dropped off at the Community Center during the clerk's regular hours.

Early in-person voting will be available at the Belle Plaine Community Center from 9 a.m. to 3 p.m. on Tuesday, Oct. 20, Wednesday, Oct. 21 as well as Tuesday Oct. 27 and Wednesday, Oct. 28. It will be also available on Saturday, Oct. 24, from 8:30 to 11 a.m. and Friday, Oct. 30, from 3 to 5 p.m. or by appointment with the clerk. Early voting ends at 5 p.m. Oct. 30.

Town update	2
Maple Lane closes	3
Shoreland survey	4
Harold Polzin	5
CLPA annual	6
Fireworks update	7
Gibson Island	8

Two seats open on Town Board in 2021

Two seats on the Belle Plaine Town Board will be open in the April, 2021, election. Supervisors **Harold Polzin** and **Dennis Thornton** have announced they will not be running for another term. Chairman **Alvin Bartz** has indicated he will run to stay on the board.

The contestants on the town ballot are decided in a town caucus system that acts as a primary election. The 2021 caucus is scheduled for Monday, Jan. 18, at 7 p.m. at the Community Center on Highway 22. See details about the caucus on page 5.

Voting amid Covid-19 provides challenges to town

By Alvin Bartz

The summer has surely come and gone very quickly. Our schools are still trying to sort out what to do and not to do amid the Covid-19 changes.

The upcoming election will make a lot of additional work for town clerks and election workers as political parties are pushing mail-in voting in advance of the actual election day. The chance for error is much greater with information being sent back and forth through the mail as well as piling up in post offices as in past elections.

I would encourage voting in person, a system that has worked well for decades. The town has put Covid safety measures in place, including masks, glass panels, one-time use of pens and lots of cleaning in the Community Center.

As always, we are trying to wrap up the maintenance projects before the white stuff flies. Blacktop and road shouldering was due to wrap up in mid September. **Dick Hesse** has completed mowing the roadsides.

Marie Rousch has done a good job with the large amount of brush this year, which has been burned at the compost site. It was a huge bonfire.

We have had reports of a lot of wildlife sightings this year. Numerous bears have been seen in all areas of the town, eagles are common and I had a call about a cougar being hit by a car near the Community Center recently.

Sandhill cranes have become a problem in my area. Last

Belle Plaine chairman's message

year, they destroyed five acres of corn in several neighbors' fields. As wheat ripens, they take out the grain. I have counted as many as 150 cranes in the field at one time.

We have pretty much settled into the expanded building that houses the fire trucks as well as town equipment. Perhaps we can have it open for inspection on election day if Covid-19 has slowed down.

We have not heard anything for certain on plans for Maple Lane after the announced closing of the health care facility. The water and sewer situation seems to be a problem there.

The harvest season is upon us. Watch out for agricultural equipment making left turns on the roads.

Sales tax to be collected

The Town Board has voted to implement the 3 percent room tax ordinance for people renting out cottages around the lakes, starting in 2021. The tax was passed in 2004 when the Boarders Inn and Suites opened.

The tax revenue is split between the town and the Shawano Country Chamber of Commerce to promote tourism.

Belle Plaine town notebook

Plan ahead for some delays in your travel plans on state Highway 22 through Belle Plaine. Repaving has started, closing one lane of traffic on an alternating basis. The new pavement will stretch from the Shawano bridge over the Wolf River to the Waupaca County line north of Embarrass. Backups as long as two miles are expected as the flagman halts vehicles then waves them through. Work is expected to continue through October.

* The Shawano Area Fire Department is seeking volunteer firefighters for its Shawano, Belle Plaine and Wescott stations. Stop at Shawano City Hall, call (715) 526-9888 for information or see Lt. **Mark Retzlaff** for an application.

*The town's compost site on Range Line Road is open until Nov. 14. Hours are from 9 a.m. to 2 p.m. on Saturdays. The Collection and Recycling Center on Cloverleaf Lake Road hours are Saturdays from 9 a.m. to 3 p.m.

* Be a good neighbor. Dog walkers are reminded to clean up their pets' waste deposits on other people's properties.

Belle Plaine officials

Alvin Bartz, chairman

Harold Polzin, supervisor

Dennis Thornton, supervisor

Kristine Vomastic, clerk

Kay Kristof, treasurer

Newsletter editor: Dennis Thornton



Belle Plaine Community Center

N3002 St. Hwy. 22

Clintonville, WI 54929

(715) 524-2690

Town clerk's hours: 9 a.m. to 3 p.m. Tuesday and Wednesday and 8:30 to 11 a.m. Saturday or by appointment

Treasurer's hours: every Wednesday 8:30 to 10 a.m. and second Mondays from 4:30 to 7 p.m.

Regular Town Board meetings:

Second Monday of each month, 7 p.m.

Committees: Planning, Zoning, Gibson Island Stewardship

Population estimate: 1,855

Owner North Shore closing Maple Lane health center

By Joan Sousek

Maple Lane Health Services, a 66-bed long-term care and rehabilitation center at N4231 State Highway 22 in Belle Plaine, is closing and its owner North Shore Healthcare is in the process of helping roughly 40 residents and fewer than 50 staff members re-locate.

North Shore, established in 2015 and based in Glendale, Wis., also owns Birch Hill Health Services, Evergreen Health Services and Shawano Health Services, all in Shawano. In all, it operates 71 skilled-nursing, short-term rehabilitation and assisted-living facilities in Wisconsin, Michigan, Minnesota and North Dakota.

Maple Lane was purchased by North Shore from Atrium Health & Senior Living in December 2019.

Reasons for the Maple Lane closure noted in a North Shore press release are the ongoing struggle with underfunding that many long-term care providers face and the strains resulting from the Covid-19 pandemic.

North Shore CEO **David Mills** says, “We recognize that changes such as these create a certain level of uncertainty. Please be assured that our commitment to our residents and staff, as well as the Shawano community, has never been stronger.”

The press release also says, “With this closure, North Shore has developed a comprehensive plan that will offer specialized programs and services to residents, provide continued employment to many of the healthcare heroes residents have come to know and trust, and maintain partnerships with the acute-care providers in Shawano and the surrounding areas.”

North Shore Vice President of Operation Strategies **Rhonda O’Dovero**, who has resided in Wisconsin her entire life, plans to be in Shawano for the duration of the re-location process. “The overall transition is going as projected,” she says.

The closure may take several months and is being conducted within state and federal regulations as staff work with families to coordinate their loved ones’ care and transition to homes that best serve their needs.



Maple Lane Health Services is closing and moving its residents.

special programming for residents with dementia.

A secure Alzheimer’s unit was completed at Maple Lane in 1995.

Town and county officials are working on what’s ahead for the Maple Lane facility, but so far, nothing is finalized, according to Belle Plaine Town Board Chairman **Alvin Bartz**, who also notes in this issue’s column, “The water and sewer situation seems to be a problem there.”

A little history

While Maple Lane’s future is unknown, its past is familiar to many Belle Plaine residents.

Articles by **Gary Emmel** and **Marcalene Rosenow** published in the Town of Belle Plaine 2008 sesquicentennial book *Treasures in Time* detail how the Shawano County Asylum and Poor House were built at the site of what would become Maple Lane Health Care Facility.

A poor house had been located in Shawano across from the courthouse, and in 1910, the county voted to purchase 414 acres in the Town of Belle Plaine with the intention of creating a poor farm and hospital to replace the poor house. The property had three houses, five barns, granaries and wagon sheds. The houses were grouped together to form the poor house and in 1911, residents, along with a superintendent and his family, moved in.

A new asylum building was completed in 1913 and the superintendent and his family moved into the new building. A new poor house was completed in 1916, but the original structures were utilized to house farm employees and their families until the buildings burned in 1919. Two houses were built across the road in 1920 for the farm boss and engineer and their families.

The old asylum building was replaced by a new facility (the current Maple Lane building) completed in 1978. About the same time, the farm was placed under separate management, but the county closed its farm operation in 1997.



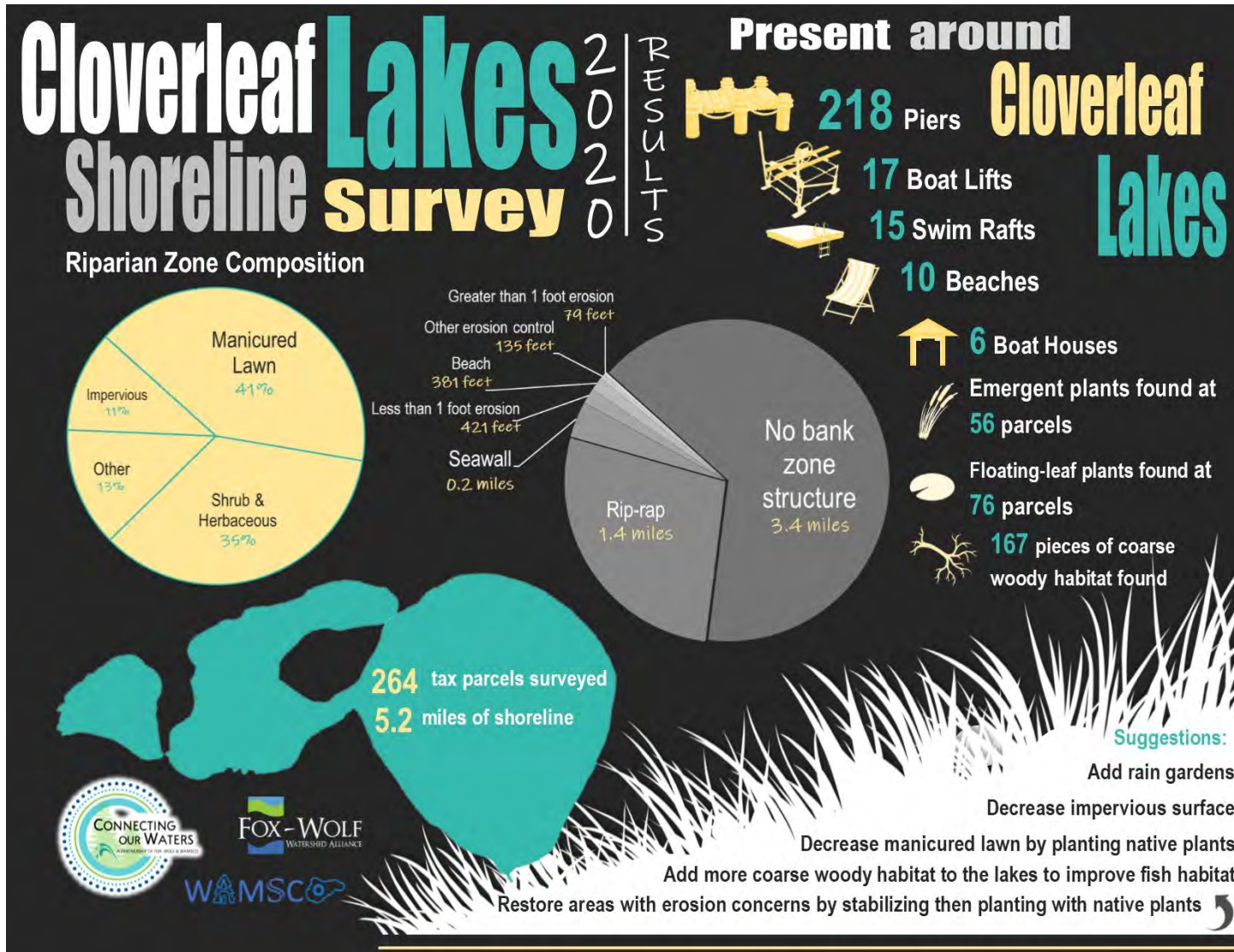
A sign salutes Maple Lane health workers.

Residents choose where they want to go, and many are moving to Shawano area facilities, O’Dovero says.

“Continuity of care is very important,” she adds and some Maple Lane staff will continue to work with Maple Lane

residents in their new homes including at Birch Hill where North Shore is making a secured memory care unit.

O’Dovero says a recent market analysis showed the need for that specialty. The unit not only will be secure, but also will have



Shoreline survey shows mix of lawn, plants

By Emily Henrigillis

The Cloverleaf Lakes shoreline and coarse woody habitat surveys were completed in June to fulfill terms of DNR grants to the Cloverleaf Lakes Protective Association and WAMSCO. Our amazing volunteer, **Kristy Krueger**, took us on a slow roll boat ride along the shoreline to make sure we could get the survey done. Thank you Kristy!

We saw a wide variety of shoreline properties, ranging from sandy beaches with volleyball nets to steep inclines with native plants and everything in between.

The results show that 41 percent of the riparian zone, lake-wide, is made of manicured lawn. The riparian zone is the first 35 feet back from the ordinary high water mark. Another 35 percent of the riparian zone was made up of shrub and herbaceous plants. Which is great!

The bank zone, or the immediate transition between water

and land, contained 1.6 miles of bank structure, whether it be rip-rap or seawall. We would love to see a decrease in these bank structures but also understand that the wind and wave action on the lake causes a need for these structures at times. No matter what is present in the bank zone, the addition of native plants to the shoreline to help stabilize the shore and reduce erosion.

The CLPA and the Town of Belle Plaine have been very conscious of improving the shoreline over the years. In 2015, a large scale Healthy Lakes initiative occurred, adding nine native plant projects to the shorelines. In 2021, we hope to complete another large Healthy Lakes grant initiative.

In addition to the Healthy Lakes funding, there is funding available year round from the Shawano County Land Conservation Department. They fund 50 percent of the project up to \$2,500. These funds can be used in combination with the Healthy Lakes funds, in case you are looking to do a large restoration.

Harold Polzin has half-century of town service

By Joan Sousek

After nearly 50 years serving the people of the Town of Belle Plaine as clerk, building inspector and supervisor, **Harold Polzin's** name will not be on the spring 2021 ballot.

His reason for stepping down was two words, "It's time."

The 83-year-old was appointed clerk when **Gilbert (Loretta) Kriewaldt** (clerk from 1937 to 1972) moved to the Town of Richmond. Harold was clerk for the next 32 years, leaving the position in 2003. In 2005, he was elected town supervisor.

Hank Hesse was town chairman when Harold started his tenure. "I think he talked me into it," Harold says.

Just as Gilbert's wife assisted him with clerk duties, Harold's wife **Sandra** did the same. Sandra, who passed away in September 2016, also served on the Shawano County Board for eight years. They were married just a few weeks shy of 60 years.

"I probably would've not kept the job if it had not been for my wife," he says. "You had to have somebody to help you ... just like **Kenny** and **Marcy Rosenow**."

Kenny, who died in December 2014, served as town treasurer for 50 years assisted by his wife Marcy.

Harold says his initial salary was \$800 annually and in the early days, a lot of the work was done by hand and/or with an adding machine.

"I remember the town got an Olivetti calculator that weighed about 30 pounds," he recalls.

He also recounts how seniors helped with gardening and other chores at Maple Lane, and one older man from there brought in a pail of rat heads because the town paid a bounty of

10 cents per head. "I didn't count them," Harold wryly notes.

The clerk also issued liquor licenses and supervised elections. He said at one time Belle Plaine had about a dozen taverns, which has dwindled to a handful.

Meeting at the old town hall initially meant firing up a wood stove and using an outhouse. Later a gas stove was installed to heat the one large room where town officials would play cards and eat peanuts when voting slowed during elections, Harold says.

Harold grew up in the Waupaca County community of Big Falls near Marion. Like many rural kids, he walked about two miles to a one-room school. He served in the Army Reserve for six years and was inspired to pursue a career in electrical, heating and refrigeration work by his brother who attended the Milwaukee School Engineering and worked for Goodyear Aircraft wiring canopies for jets.

Harold married Sandra in 1956 and was a partner in a heating business in Clintonville before the couple started Harold Polzin Electrical & Heating Service at Cloverleaf Lakes in 1977. The business was selling and servicing heating and air conditioning equipment, fabricating sheet metal and doing electrical work.

Initially, they operated from their home at W8262 Cloverleaf Lake Road, but they outgrew the space and in 1995 purchased what had been a go-kart business at N2501 Pioneer Road, just off County Y across from The Pines (formerly Pine Manor). At one time, they had a crew of four employees.

The property had a pole shed, small house and 8.5 acres. The house became the office and the pole shed the shop. Harold retired from the business three years ago when he was 81.

His son, **Jeff**, has his own business, Jeff Polzin Heating and Electric, based on Rustic Drive. Son **Raymond** works for Arrowcast and lives next door to Harold, and daughter **Cindy Lou** owns Village Garden Flower Shop, Shawano. He has several grandchildren and great-grandchildren.

Harold still has the shop and likes to spend time there. He says he'd like to do a bit more fishing and plans to continue playing sheephead with a group that meets at the Belle Plaine Community Center every Thursday.



Harold Polzin

Want to run for Town Board? Here's how

A town caucus to determine the candidates for Belle Plaine Town Board is scheduled for Monday, Jan. 18, at 7 p.m. Supervisors **Harold Polzin** and **Dennis Thornton** have announced they will not be running for another term. Chairman **Alvin Bartz** has indicated he will run to stay on the board.

The contestants on the town ballot are decided in a town caucus system that acts as a primary election.

Candidates must be full time town residents, eligible to vote in the town. Anyone interested in appearing on the ballot for the

Tuesday, April 6, election should come to the January caucus and bring a few friends and neighbors. Candidates declare their intentions then pass out slips of paper with their names.

If there are more two candidates for any of the three seats on the board, an election will be held at the caucus to choose the candidates on the spring ballot.

Check for lake/town news at
www.CloverleafLakes.com and
www.BellePlaineWI.com

CLPA annual meeting focuses on invasives treatment

Cloverleaf Lakes Protective Association Annual Meeting

Location: Zoom 9 a.m. Sept. 5, 2020

All Board members present, introduction of Board Members.

21 CLPA members present.

1) Chris Sampson called the meeting to order.

2) Jessica Meier presented the treasurer's report. Balance sheet looks good with about \$118,000 in the account. We may need more funds in the near future to fight the invasive species, conduct water testing and fund the boat monitor. We are not sure about future DNR grants. Currently there are 230 members. Jessica has applied for class A and B raffle licenses. Greg Martin moved to accept the treasurer's report, Gary Schumacher seconded, motion carried.

3) Emily Henrigillis of the Fox Wolf Watershed Alliance gave a lake report. Fox Wolf did a shoreline survey this summer of 264 parcels on all three lakes including 5.2 miles of shoreline. (See page 4 for details.)

4) For an invasive update, the last whole lake chemical treatments for invasives were on Pine and Grass Lakes in 2016 and Round Lake in 2018. We also did two weeks of hand harvesting with divers last year. This year Round and Pine

Lakes are fairly good with isolated clumps of milfoil. Grass Lake has much more milfoil, especially in high traffic areas. We had two days of hand harvesting this year. Grass Lake is severe but may not be bad enough to get permits for chemical treatments yet. Spot treatments with isolating curtains are being perfected and the CLPA board will look further into this method. Any Eurasian Water Milfoil may be pulled by anyone that would like to. Please try to remove all roots. A 30 foot path of shoreline can be removed of all vegetation. Probably there will not be any hand harvesting next year but the board will pursue containment treatments at multiple spots.

5) Kevin Goodman gave a boat monitor report. Three people were trained this year and all are doing a good job. Kevin also gave a water quality report. Water quality is good. As we progress through the year water is cloudier, greener and has less oxygen but nothing alarming. Phosphorus is high but also not alarming.

6) Fishing has been good. It appears bluegill and pumpkin-

seed limits of only five fish over 7 inches and 25 total bag limits along with the fish sticks that were placed in the lake are helping. The DNR will be checking the fishery again next year.

7) Gibson Island report. Joy Krubsack is the point person. There have been native plantings and outside trails have been kept clean.

8) Rick Schultz asked who controls the outlet dam. The town owns the dam on Rustic Drive and the DNR has the historic range, this is a very grey area. A private dam by Highway Y also affects the lake level. CLPA will do more research on this. The board will also check on putting permanent markers for lake level

by the culvert between Round and Grass Lakes.

9) There were lots of July 4 activities and it was an exciting weekend. The Pontoon parade was successful. Fireworks were received very well. Any thoughts on future activities, please contact CLPA board.

10) Boater safety report. CLPA has a line item in the budget for water patrol. The lakes are patrolled sometimes and the CLPA also hires the safety patrol from time to time. It has been noted that some renters may not know the rules of the lake, and the CLPA will try to better inform non-residents of the

rules. Also there is a concern about boats not following slow, no-wake rules on Round Lake. We will make sure signs are more visible and not covered with weeds. It was suggested to have boat monitors give out a list of rules.

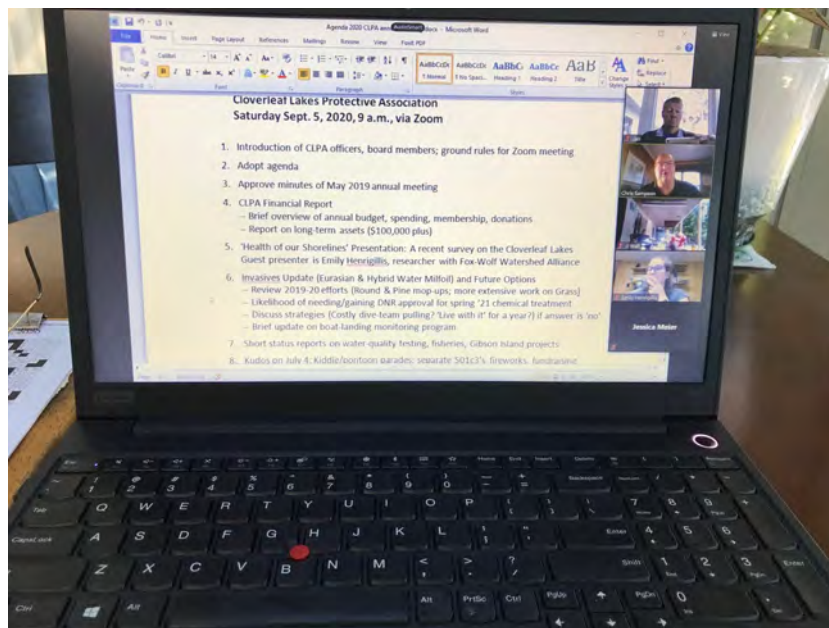
11) ATV and UTV rules were discussed. Please review rules on the town website. If there are any concerns please call the Sheriff Department.

12) There will be a comprehensive survey going out soon. This will help and be part of our Comprehensive Lake Management Plan needed for DNR grants.

13) Mary Schultz asked if the CLPA could somehow help out with education on sandbar etiquette. She will attend the next monthly board meeting and discuss this further.

14) The CLPA has been a very successful Lake Association since 1936. Thanks to everyone that has made this a wonderful area.

15) Motion to adjourn by Jessica, second by Greg. Meeting adjourned at 10:30 a.m.



The Cloverleaf Lakes Protective Association annual meeting was held virtually by Zoom, a first for the nearly century-old group.



Wisconsin's Recreation Center
The Place for Health, Rest & Pleasure
CLPA incorporated in 1936

P.O. Box 288
Embarrass, WI 54933-0288

"Preserving our lakes for future generations"

If you haven't paid your 2020 dues, please make your check for \$25 payable to Cloverleaf Lakes Protective Association, fill out and clip this form, and send it to CLPA, P.O. Box 288, Embarrass, WI 54933-0288. The membership is for the calendar year 2020. Please consider making a tax-deductible donation.

Name: _____

Lake Address: _____

Telephone: _____

E-Mail: _____

Home Address (if different): _____

Dues \$ 25.00
I would like to make a tax-deductible donation of \$ _____
TOTAL ENCLOSED \$ _____

Board of Directors

(920) 830-2788

Jessica Meier, co-president
and treasurer
JessicaMeier
@UWalumni.com

Gary Schumacher,
Secretary
Gary@Garyschumacher.
com

Christopher Sampson,
co-president
csampson@new.rr.com

Greg Martin
GLLMartin@
SBCGlobal.net
(312) 543-5106

Kevin Goodman, vice
president
Cloverleafprotective
@gmail.com

Peggy McMahon
PMcMahon23@gmail.com

Planning begins for 2021 fireworks show

By Claude Wait

Our team has had so much fun working with everyone in this small community to bring back your yearly fireworks show. The past couple of years have presented different challenges to achieve these goals. We have learned from these and could not be more excited about the future of this summer holiday event.

We have been working hard to get our non-profit group organized and would now like to promote new membership opportunities in the 2021 year. If you have a passion for the Cloverleaf Lakes and have an interest in joining our team, please email **Peggy McMahon** at pcmcMahon23@gmail.com or **J.J. Wait** at jjwait@frontiernet.net or call J.J. at (715) 250-3005.

Our team meets monthly in addition to our annual meeting in July. We are looking for motivated volunteers to contribute ideas and execute tasks that will elevate our mission of providing a free professional fireworks show for all of the

families and businesses that live, work and vacation in this area. Please reach out to us if you would like to be part of this fun team or if you have any questions.

Our planning for the 2021 show has already begun. Keep up on our 2021 progress on the rocket located across from the boat landing on county road Y. We are seeking donations and support to build this tradition for years to come. Please consider donating or advertising today.

Donations can be mailed direct to: Cloverleaf Lakes Fireworks Inc., P.O. Box 275, Embarrass, WI 54933

We have a GoFundMe page at "Cloverleaf Lake Fireworks 2021" and our Facebook page name is "Cloverleaf Lake Fireworks Inc." Please share with your friends, family and neighbors to keep up on our progress. We hope you enjoyed the 2020 show with your family, friends, and neighbors and look forward to 2021 with excitement and optimism for an even better celebration.

Belle Plaine calendar

Oct. 12: CLPA board, 9 a.m., Community Center

Oct. 12: Town Board, 7 p.m., Community Center

Nov. 3: Election, 7 a.m. to 8 p.m., Community Center

Nov. 9: Town Board, 7 p.m., Community Center

Dec. 14: Town Board, 7 p.m., Community Center

Jan. 11: Town Board, 7 p.m., Community Center

Jan. 18: Town caucus for spring election, 7 p.m., Community Center

Jan 31: First half payment of property taxes due.

Belle Plaine Community Center
N3002 St. Hwy. 22
Clintonville, WI 54929

Morgan Jensema awarded for Gibson Island work

By Joy Krubsack

Morgan Jensema was our first Gibson Island Youth Steward to receive an appreciation certificate for donating 20-plus hours to the care of the Gibson Island property.

In the past few years, our Youth Stewards have donated more than 60 hours of care to the property and we, the citizens of Belle Plaine, truly appreciate the efforts these young people have given. We also appreciate the leadership roles they have taken for the future environment of the island.

Adults are always encouraged to jump in, too, when it comes to controlling invasive species on Gibson Island. At this time, we are working against black locust (**Andy Hines** is the leader), oriental bittersweet (**Molly and Steve Joosten, Dale and Connie Fruendt**), giant mullein and knotweed/bamboo (**Joy Krubsack**), dames rocket (**Linda Goodman**) and garlic mustard (**Chris Cloeter and Leah Smejkal**).

If you want to help out, please email jkrubsack@hotmail.com or call (715) 823-6480 for more information. As a Youth Steward, you need to be in 8th grade or older and attend an orientation hike.



Joy Krubsack, left, and Town Chairman Alvin Bartz presented an appreciation certificate to Morgan Jensema for her work on the Gibson Island property. Joy chairs a Youth Stewardship program to help on the natural area.